



GMT MONTHLY MEMBERSHIP PROGRESS REPORT

Results as of: 4/30/2019

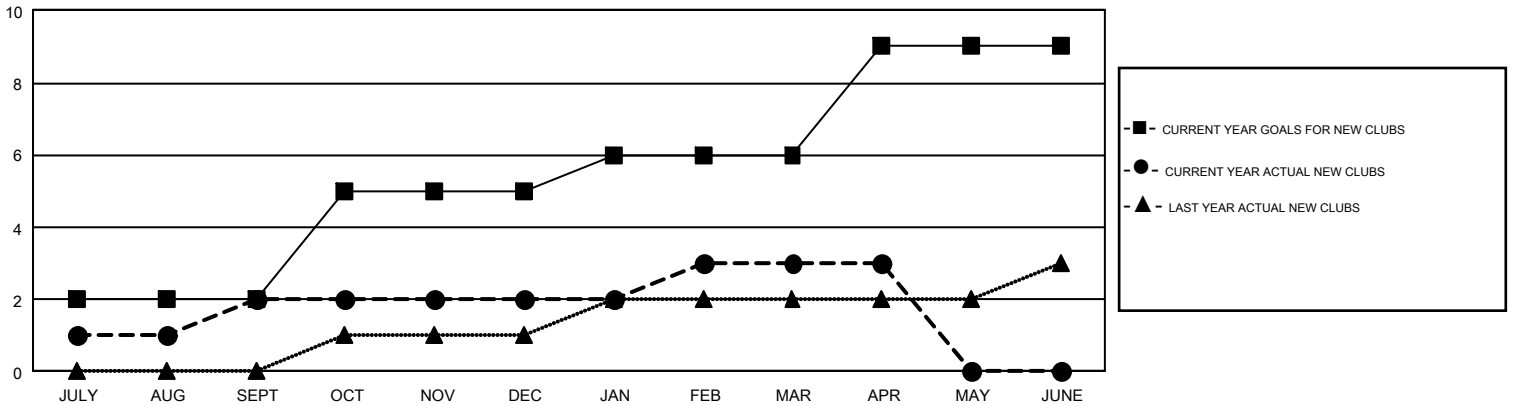
GMT Constitutional Area 6-Afr, Group J

GMT: RASHMI KOOVERJEE

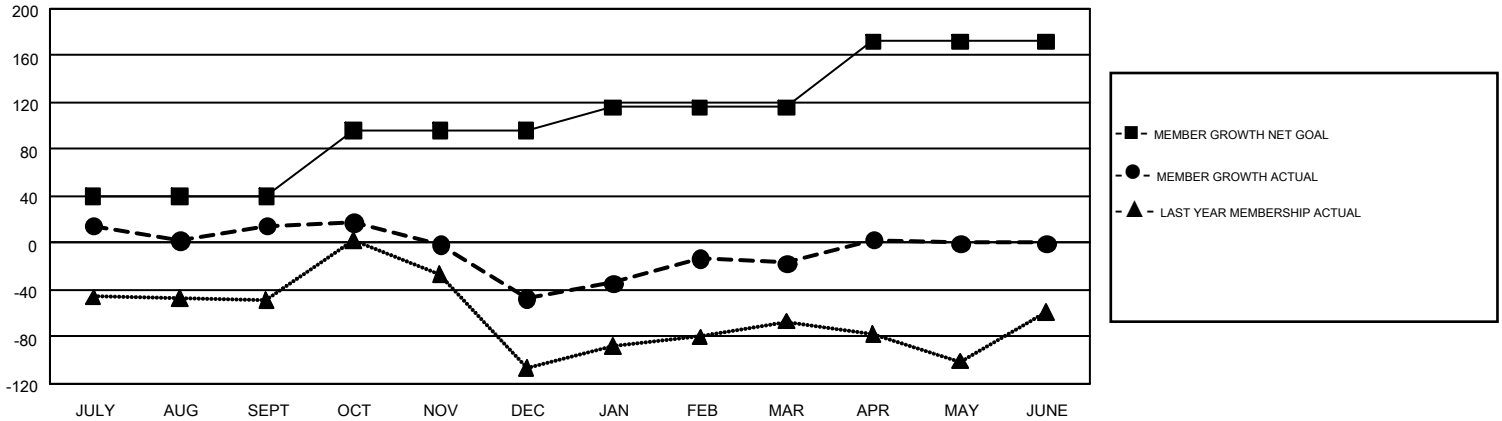
REPORT DOES NOT INCLUDE CLUBS IN UNDISTRICTED AREAS.

Clubs				Members			
RESULTS FOR 2018-2019				RESULTS FOR 2018-2019			
QUARTER	NEW CLUB GOAL	NEW CLUBS	DROPPED CLUBS	QUARTER	MEMBER GROWTH NET GOAL	MEMBER GROWTH ACTUAL	DROPPED MEMBERS ACTUAL (including transfers)
JULY/AUG/SEPT	2	2	0	JULY/AUG/SEPT	40	119	91
OCT/NOV/DEC	3	0	0	OCT/NOV/DEC	56	53	110
JAN/FEB/MAR	1	1	0	JAN/FEB/MAR	20	103	67
APR/MAY/JUNE	3	0	0	APR/MAY/JUNE	56	44	22

GOALS AND ACTUAL NEW CLUBS CUMULATIVE



GOALS AND ACTUAL MEMBERS CUMULATIVE



DROPPED CLUBS: 0	76 CLUBS OF 142 ADDED 1 OR MORE NEW MEMBERS	GENDER DISTRIBUTION
DROPPED MEMBERS	CLICK HERE FOR CUMULATIVE MEMBERSHIP DATA	MALE 1,311 (55.15%)
DECEASED 15		FEMALE 1,066 (44.85%)
CLUB CANCELLED 0		TOTAL FAMILY UNIT MEMBERS 662
OTHER 275		FAMILY MEMBERS PAYING HALF DUES 343
TOTAL 290		